

New Zealand Wine Futures Fund

Connecting the industry with novel approaches to risks and opportunities

Bragato Research Institute

info@bri.co.nz | +64 9 306 5524

85 Budge Street, Blenheim 7201

PO Box 845, Blenheim 7240, New Zealand

bri.co.nz

APPLICATION AND ASSESSMENT GUIDELINES

ABOUT

The purpose of the New Zealand Wine Futures Fund (NZWFF) is to benefit industry by encouraging new ideas, approaches and capabilities in winegrowing research.

In general, wine research in New Zealand is funded by New Zealand Winegrower (NZW) levies, Government and individual organisations. Programmes and projects are collaborations, which can include universities, Crown Research Institutes, industry consultants, international research organisations and others.

The levy-funded research programme is delivered through Bragato Research

Institute, which project manages all levy-funded projects. These research activities range from long-term strategic goals to shorter, applied projects and extension.

The New Zealand Winegrowers Futures Fund (NZWFF) complements the current investments in the wine industry's research portfolio and enables fresh ideas to be considered through an open call process.

A balanced investment portfolio will comprise low and high-risk investments. While most levy funding is set aside for low-risk investments, such as strategic programmes with Government partners

and applied research, this smaller NZWFF fund targets untested and higher risk research. While NZW levies support a range of projects, this fund explicitly seeks to bring new techniques and approaches to the NZ wine research portfolio. The call for expressions of interest also enables a pathway for new capabilities to benefit the wine industry.

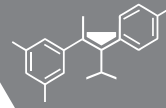
The NZWFF is funded through NZW levies and will be administered, and project managed, by Bragato Research Institute. For more about the institute and current research in the wine industry, visit bri.co.nz.

Date	Activity	Notes
Mid-June	Expressions of interest open	EOIs must be sent to research@bri.co.nz to be considered for NZWFF
12 July, 5pm NZST	Expressions of interest close	EOIs must be received by 5pm at research@bri.co.nz
Late July	Short-listed applicants invited to next stage; unsuccessful applicants notified	Full proposal templates issued to short-listed applicants
Early to Mid-August	Deadline for full proposals from short-listed applicants	Two weeks from notification of short-list
Late August	Notification to successful applicants	Pre-contracting begins

Bragato Research Institute may (without limitation) change any aspect of this NZWFF, including any time or date. In such case, new dates will be posted at bri.co.nz/research-overview

VERSION 1: 10 June 2021

© COPYRIGHT AND/OR DISCLAIMERS: This publication must not be reproduced or distributed, electronically or otherwise, in whole or in part without the written permission of the New Zealand Winegrowers Research Centre Limited, trading as Bragato Research Institute. All monetary values quotes are in NZ Dollars and are GST inclusive. All dates and times are New Zealand Standard Time.



THE INVESTMENT

NZWFF is a contestable fund, now in its inaugural year. Successful projects may be funded for one to three years, and up to \$150,000 per annum. We encourage applicants to consider projects covering a range of values and durations, and to ensure the project is scaled to the idea, outputs and deliverables.

Projects must align with industry priorities (see page 4). Successful applicants are required to begin this financial year (prior to 1 July 2022).

Co-investment is not a requirement to apply but will be viewed favourably.

In-kind or non-cash contributions should be included in the total cost of the project.

The applicant must disclose all such third-party funding in the expression of interest form and any subsequent changes if funding is granted.

Applicant Eligibility

The fund is open to New Zealand legal entities. This includes, but is not limited to, New Zealand Winegrowers members, research organisations, businesses, or other umbrella organisations.

While the applicant must be New Zealand-based, participation from international partners is welcome. It is expected that the majority of research will be undertaken in New Zealand, but this is not a requirement (eg biosecurity). Please advise if your project involves international partners.

Project Eligibility

Eligible projects are those that are new to the industry with respect to current practice and approaches. Expressions of interest that do not meet these novelty criteria will not be assessed at the discretion of Bragato Research Institute.

Eligible projects must:

- Be for the benefit of industry.
- Show promise, as determined by the assessment, of a new idea or approach of bringing value to the industry.
- Not have been the subject of a previous research project or programme supported by New Zealand Winegrowers, or by another investor for the benefit of the New Zealand wine sector.
- Not have been the subject of a previous expression of interest for funding from New Zealand Winegrowers or Bragato Research Institute, unless invited by the institute to resubmit.

ASSESSMENT CRITERIA

All expressions of interest will be assessed by the New Zealand Winegrowers Research Advisory Committee (RAC), with a shortlist prepared for approval by the Bragato Research Institute Board of Directors. Shortlisted applicants will then be invited to submit a full proposal.

Final approvals of full proposals will be made by the Bragato Research Institute Board of Directors. The institute reserves the right to seek external expert assessment of proposals, under non-disclosure arrangements with expert assessors that the institute selects at its absolute discretion.

The Bragato Research Institute Board decisions will be final, and no correspondence will be entered.

Overall, assessment will focus on three criteria:

- Benefit to New Zealand wine industry
- Implementation
- Team excellence

Benefit to New Zealand wine industry:

New Zealand Winegrowers is funding successful proposals in this process, so projects must clearly align with its priorities, offer a suitable return on investment and be measurable. Assessment will include:

- How the proposal will address the problem or opportunity that aligns with the industry's priorities on page 4
- The scale and extent of potential benefits from the proposed research
- The measurable impact of these benefits for the New Zealand wine industry
- Whether the science is the right match for the problem or opportunity identified
- Whether the project is well planned and offers value for the requested investment

Applicants must demonstrate that they are committed to delivering benefits to the New Zealand wine industry.

Implementation: Assessment will examine how this proposal would lead to outcomes for the industry. Clarity about how the proposal will deliver impact through communications, extension and implementation will be key focus areas

for expressions of interest invited to the full proposal stage. Assessment will examine the following:

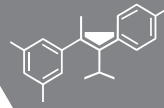
- How the project is planning to communicate though extension to the industry, the results of the project
- The likelihood of uptake by the industry
- Barriers to implementation and ways to overcome them

A proposal may focus on testing whether an approach has implications for the wine industry, such as a PhD project. In this case, the assessment will focus on New Zealand's capability and infrastructure for future research and implementation.

Team excellence: The assessment will consider the makeup and capability of the applicant and research team in its ability to deliver on the objectives and project plan. Assessment will examine:

- The team's ability to carry out the proposal
- Previous track record of project delivery
- Whether the project would add a new capability to the research ecosystem





TERMS AND CONDITIONS

NZWFF operates as a fully contestable fund, where research proposals are sought, selected and funded on the basis of a contestable process.

1. The terms and conditions are non-negotiable. Each applicant that submits an Expression of Interest (EOI), or Full Proposal if requested, to the NZWFF will be deemed to have agreed to the terms and conditions without variation.

2. Submitting: All EOIs and Full Proposals must be sent to research@bri.co.nz and be received by 5pm on the closing date to be considered for this NZWFF. Other methods of submission will not be accepted.

3. Confidentiality: Bragato Research Institute and the Applicant will each take reasonable steps to protect Confidential Information and will not disclose Confidential Information to a third party without the other's prior written consent. Both parties may disclose Confidential Information to any person who is directly involved in the EOI or Full Proposal process on its behalf, such as officers, employees, consultants, contractors, professional advisors, NZW Research Advisory Committee (RAC) members, partners, principals or directors, but only for the purpose of participating in this EOI or subsequent process.

4. Conflicts of Interest: Your EOI or Full Proposal must state whether you would have, or could be perceived as having, any actual or potential conflicts of interest in the application process. For any conflict identified, you should provide details of the nature and extent of the conflict, and any proposed procedures for managing it.

5. Communication / Additional Information / Clarification:

All communication pertaining to this matter with Bragato Research Institute must be conducted solely with research@bri.co.nz.

6. Accuracy: Bragato Research Institute has endeavoured to provide correct information in this NZWFF process but accepts no responsibility or liability in the event of any errors.

7. Final decisions: Final decisions on funding will be made by the Bragato Research Institute Board.

8. Response costs: You will be responsible for all costs incurred in preparing your EOI and participating in the NZWFF process.

9. No binding legal relations: This EOI process does not create a process contract or any legal relationship between you and NZW except in respect of the confidentiality obligations set out above. If an EOI or Full Proposal is successful, Bragato Research Institute will contract the Research under a separate standard research agreement to cover timelines, expectations, outputs and payments.

10. Bragato Research Institute's rights: The Institute may (without limitation):

- (a) choose not to fund any EOI or Full Proposal
- (b) reject any EOI or Full Proposal for any reason;
- (c) consider alternative proposals provided;
- (d) change any aspect of this NZWFF, including any time or date; and
- (e) suspend or cancel this NZWFF process at any time.

11. New Zealand laws: The laws of New Zealand will govern this NZWFF process, and you submit to the non-exclusive jurisdiction of the New Zealand courts in respect of any dispute concerning this process.

12. Funding: All Funding will be paid and distributed in accordance with the Commodity Levies Act and the Wine (Grape Wine) Levy Order 2016 and the Winegrape Levy Order 2016.

13. Publicity: Bragato Research Institute may publicise information, including but not limited to any successful applicants, key partners and the successful project. This information will be made available to New Zealand Winegrower members and the public, and may be displayed on the Bragato Research Institute and New Zealand Winegrowers' websites.

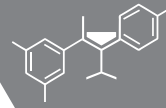
14. Communication: Bragato Research Institute is not required to provide feedback on any EOI or Full Proposal. Any feedback given is at the discretion of Bragato Research Institute.

15. Intellectual Property: Any EOI or Full Proposal that is submitted in the NZWFF process will remain the property of Bragato Research Institute. Documents will not be returned to applicants at the conclusion of the NZWFF process. This NZWFF document, and any other documents provided to you during this process remain the property of Bragato Research Institute.

16. Inducements: You must not directly or indirectly provide any form of inducement or reward to any RAC member, officer, employee, advisor, or other representative of Bragato Research Institute in connection with this NZWFF process.

17. Liability: Neither Bragato Research Institute and New Zealand Winegrowers Incorporated, officers, employees, advisers or other representatives nor any RAC members will be liable (in contract or tort, including negligence, or otherwise) for any direct or indirect damage, expense, loss or cost (including legal costs) incurred or suffered by you, your affiliates or any other person in connection with the NZWFF process. By participating in this NZWFF process, you waive any rights you have to make a claim against Bragato Research Institute, to the extent that liability cannot be excluded. Liability of Bragato Research Institute is limited to \$1.





Industry Research Priorities

