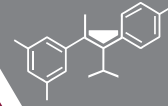


# BRI Extension Report

FY23: July 2022 to June 2023



**BRAGATO**  
RESEARCH INSTITUTE  
RANGAHAU KAREPE, WĀINA O AOTEAROA



## Written and audio visual resources

BRI authored/co-authored	<b>61</b>
BRI reviewed	<b>49</b>
<b>Total</b>	<b>110</b>

## Resources by topic



Aroma and flavour compounds	<b>2</b>	Pinot Noir Programme	<b>18</b>
Botrytis	<b>3</b>	Pruning	<b>6</b>
Canopy	<b>1</b>	Rootstocks	<b>2</b>
Climate change	<b>2</b>	Sauvignon Blanc Programme	<b>10</b>
Cyclone	<b>1</b>	Soil and water	<b>12</b>
Frost and hail	<b>6</b>	Spraying	<b>1</b>
Genetics	<b>4</b>	Technology	<b>1</b>
Grapevine nutrition	<b>2</b>	Trunk and root disease	<b>5</b>
Grapevine virus	<b>3</b>	Vineyard Ecosystems	<b>8</b>
Harvest and winemaking processing	<b>3</b>	Weeds and vineyard floor	<b>3</b>
Insects	<b>12</b>	Yield	<b>2</b>
Mildews	<b>3</b>		

## Resources by type



Factsheets	<b>5</b>
Audio visual	<b>11</b>
Science reports	<b>20</b>
Journal article	<b>4</b>
Popular articles	<b>22</b>
Presentations	<b>20</b>
Vinefacts email	<b>28</b>

## Resources by strategy theme



Genetics for winegrowing	<b>13</b>
Sustainable winegrowing	<b>18</b>
Tomorrow's vineyards	<b>29</b>
Winemaking innovation	<b>21</b>
Knowledge sharing	<b>29</b>



## Events

BRI led/co-led	<b>12</b>
BRI supported or presented at	<b>5</b>
<b>Total events</b>	<b>17</b>
<b>Total attendance</b>	<b>638</b>

## Events by topic



Canopy	<b>1</b>
Fermentation and Yeast	<b>1</b>
Grapevine Improvement and technology	<b>1</b>
Harvest and Winemaking processing	<b>3</b>
Insects	<b>1</b>
Pest & Disease	<b>1</b>
Pinot Noir Programme	<b>4</b>
Pruning	<b>2</b>
Sauvignon Blanc Programme	<b>2</b>
Vineyard Ecosystems	<b>1</b>

## Events by region



ONLINE	Events <b>1</b> Attendance <b>16</b>
AUCKLAND	Events <b>3</b> Attendance <b>17</b>
HAWKE'S BAY	Events <b>1</b> Attendance <b>34</b>
WAIRARAPA	Events <b>1</b> Attendance <b>31</b>
MARLBOROUGH	Events <b>10</b> Attendance <b>231</b>
CANTERBURY	Events <b>2</b> Attendance <b>270</b>
CENTRAL OTAGO	Events <b>1</b> Attendance <b>39</b>